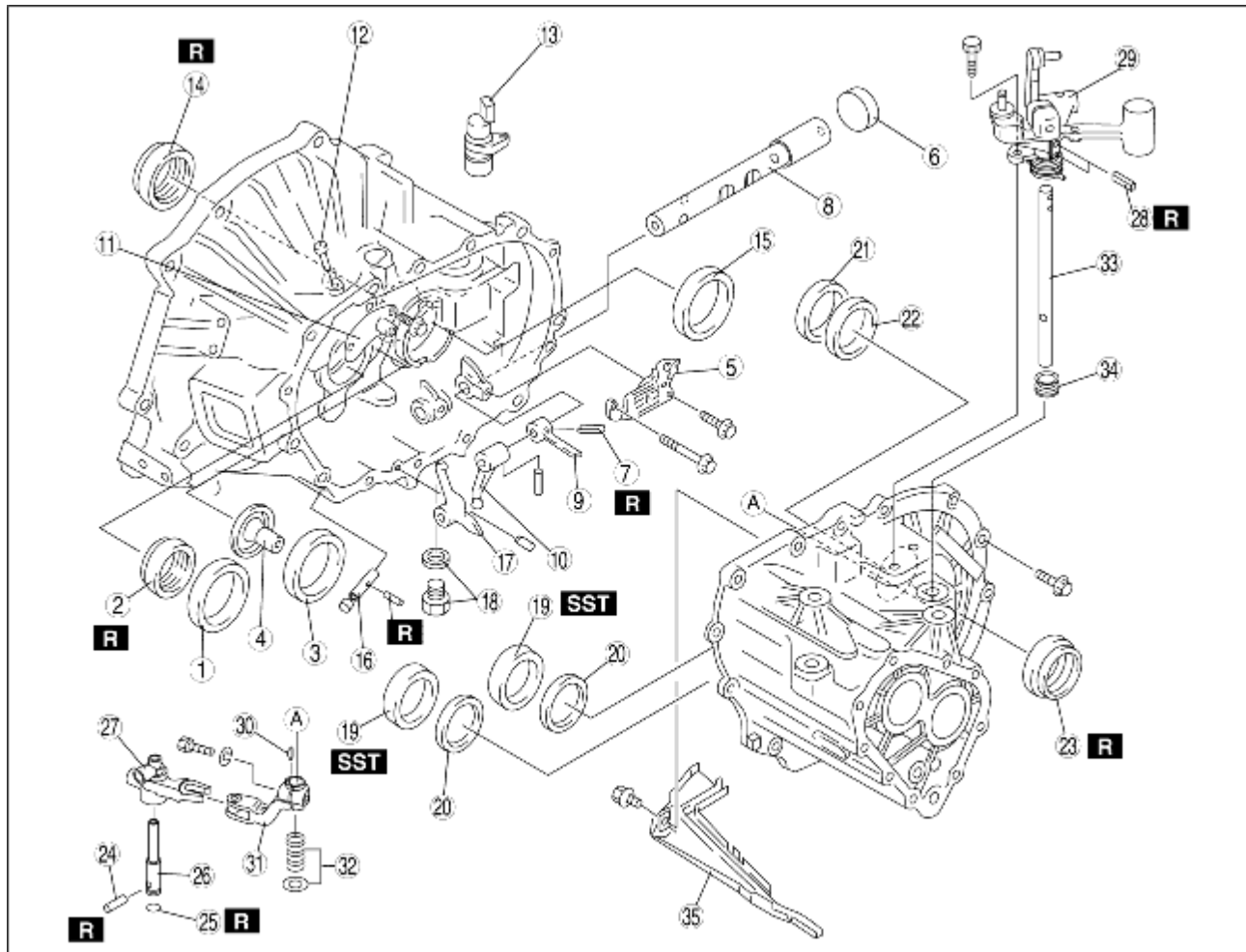


CLUTCH HOUSING AND TRANSAXLE CASE COMPONENTS DISASSEMBLY

B3E051517010M01

1. Disassemble in the order indicated in the table.



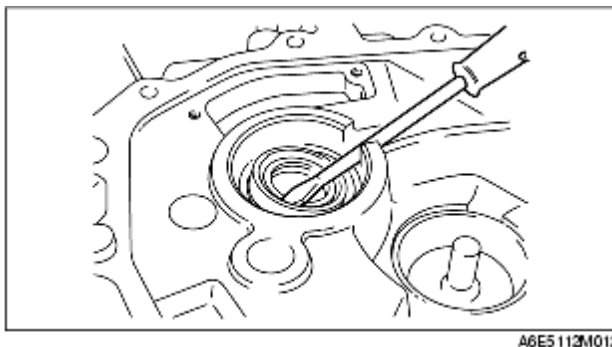
B3E051517010M01

1	Bearing race (primary shaft)
2	Oil seal (primary shaft) (See Oil Seal (Primary Shaft) Disassembly Note.)
3	Bearing race (secondary shaft) (See Bearing Race (Secondary Shaft) Disassembly Note.)
4	Funnel
5	Guide plate component
6	Sealing cap
7	Roll pin (See Roll Pin Disassembly Note.)
8	Control rod (See Control Rod Disassembly Note.)
9	Selector
10	Change arm

11	Breather cover component
12	Breather
13	Hole cover
14	Oil seal (differential) (See Oil Seal (Differential) Disassembly Note.)
15	Bearing race (differential) (See Bearing Race (Differential) Disassembly Note.)
16	Reverse lever shaft (See Reverse Lever Shaft Disassembly Note.)
17	Reverse lever
18	Drain plug and washer
19	Bearing race (transaxle case) (See Bearing Race (Transaxle Case) Disassembly Note.)
20	Adjustment shim
21	Bearing race (differential) (See Bearing Race (Differential) Disassembly Note.)
22	Adjustment shim
23	Oil seal (differential) (See Oil Seal (Differential) Disassembly Note.)
24	Dowel pin
25	O-ring
26	Crank lever shaft
27	Crank component lever
28	Roll pin
29	Shift lever component
30	Key
31	Control end
32	Spring and washer
33	Shift lever shaft
34	Boots
35	Oil passage

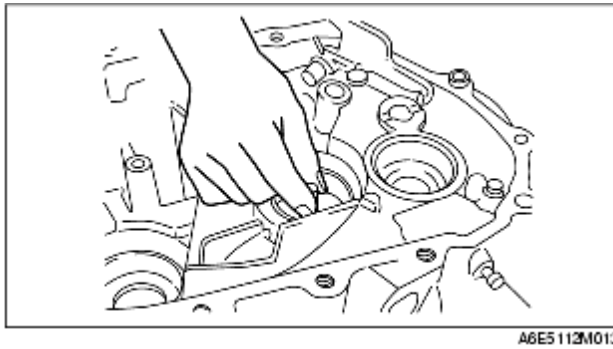
Oil Seal (Primary Shaft) Disassembly Note

1. Remove the oil seal using a flathead screwdriver.



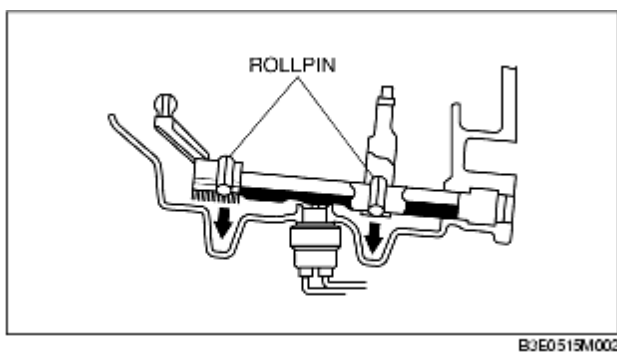
Bearing Race (Secondary Shaft) Disassembly Note

1. Remove the bearing race by lifting it and the funnel out together.



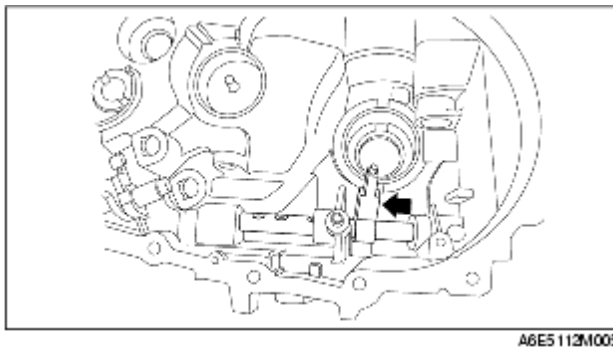
Roll Pin Disassembly Note

1. Align the groove for removal of the clutch housing pin with the position of the roll pin, then tap the pin out using a pin punch.

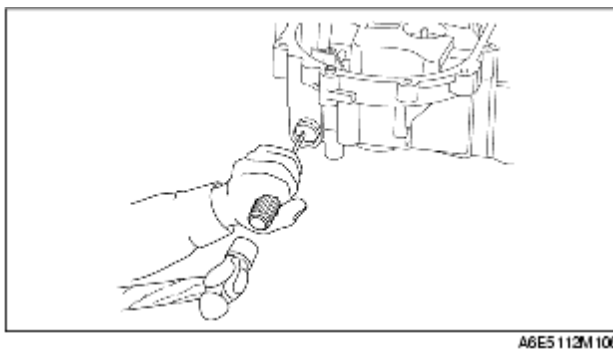


Control Rod Disassembly Note

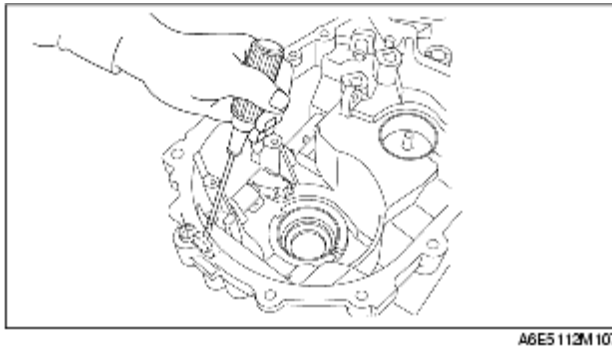
1. Move the control rod in the direction of the arrow.



2. Using a flathead screwdriver and hammer, make a hole on the cap.

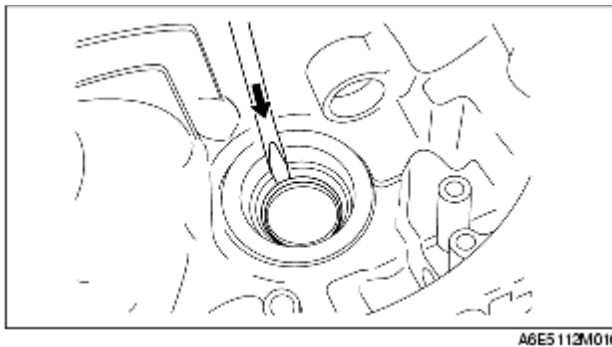


3. Remove the seal cap by putting the flathead screwdriver into the hole, made in Step 2, from the inside of the transmission.



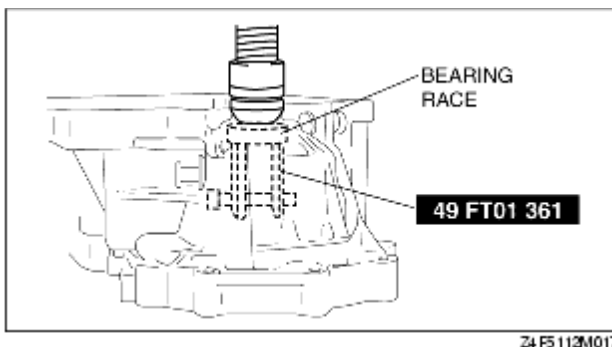
Oil Seal (Differential) Disassembly Note

1. Remove the oil seal using a flathead screwdriver.



Bearing Race (Differential) Disassembly Note

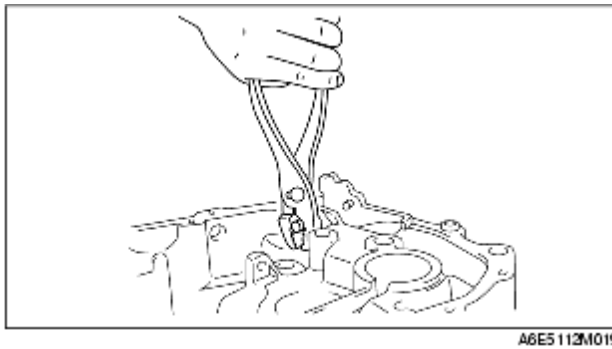
1. Remove the bearing outer race using the SST.



Reverse Lever Shaft Disassembly Note

1. Remove the roll pin using pliers.

2. Protect the reverse lever shaft with a rag and use pliers to remove the shaft.



Bearing Race (Transaxle Case) Disassembly Note

1. Remove the bearing race using the **SST**.

